



PT Sumatera Riang Lestari, a timber company affiliated to APRIL, clearcut natural forest in small island Pulau Rupert, Riau Province, in 2011 amid conflict with community



Investigative Report
Eyes on the Forest
Published November 2011

Eyes on the Forest (EoF) is a coalition of environmental NGOs in Riau, Sumatra: Friends of the Earth Riau Office, Jikalahari "Riau Forest Rescue Network" and WWF-Indonesia, Riau Program. EoF monitors the status of the remaining natural forests in Sumatra's Province of Riau and disseminates the information worldwide. More news on Eyes on the Forest, go to: <http://www.eyesontheforest.or.id>
Email: eof@eyesontheforest.or.id

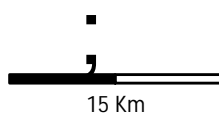
EoF Investigative Findings in Pulau Rupal

In investigation conducted in September 2011, Eyes on the Forest (EoF) finds that PT Sumatera Riang Lestari of Blok Pulau Rupal, a timber company affiliated to Asian Pacific Resources International Holdings Limited (APRIL) in Riau Province has already clearcut natural forest. EoF investigatos team found the company draining peat canals by excavators. The canals made to transport its felled trees from natural forest to send to APRIL pulp mill, PT Riau Andalan Pulp & Paper in Pangkalan Kerinci town. Draining peat canals will affect peat ecosystem for the release of huge carbon and subsidence of the land.

Moreover, if concession of PT Sumatera Riang Lestari in Pulau Rupal is overlaid with Minister of Forestry Decree Number 323/Menhut-II/2011, dated 17 June 2011 on Determining Indicative Map on Postponement for Granting New License for Forest Utilization, Forest Area Utilization and Conversion of Forest Area and Other Uses, so that the concession obviously sits inside the area that banned by the Government for forest conversion in peatlands.

[EoF Investigation on PT SRL Pulau Rupal that published in February 2011](#) found that the APRIL's timber supplier allegedly breaches the Law as its concession contains good forest that must have been protected as EoF overlaid satellite image Landsat TM 5 in 2008. Entire concession of PT. SRL Blok Pulau Rupal has peat depth ranging from 2 meters to 4 meters (Wetlands International & Canadian International Development Agency 2003: (Map of Area of Peatland Distribution and Carbon Content 2002 Riau Province).

In addition to this, consession of PT Sumatera Riang Lestari in Pulau Rupal which is overlaid with National Spatial Land based on Regulation of Indonesian Government Number 26 Year 2008 on the National Spatial Plan has confirmed that the entire concession sits inside the National Protected Area.



Data Source :

1. Topographical Map of Indonesia - Bakosurtanal 2008
2. Pulpwood Concessions - Ministry of Forestry 2011
3. MoF decree No: 323/Menhut-II/2011, 17 June 2011 about determination of indicative map of new forest utilization permit delays, forest use and forest allotment changes and other land use.

Legend :

- District Boundary
- River
- ▭ PT. SRL - Pulau Rupert Block
- Location Permit Delays on Peatlands



Map 1. PT Sumatera Riang Lestari concession in Pulau Rupert that overlaid by map based on Minister of Forestry Decree Number 323/Menhut-II/2011, dated 17 June 2011 concerning to Determining Indicative Map on Postponement for Granting New License for Forest Utilization, Forest Area Utilization and Conversion of Forest Area and Other Uses, so the concession sits inside the area banned by the Government to manage forest in the peatlands (see pink color).

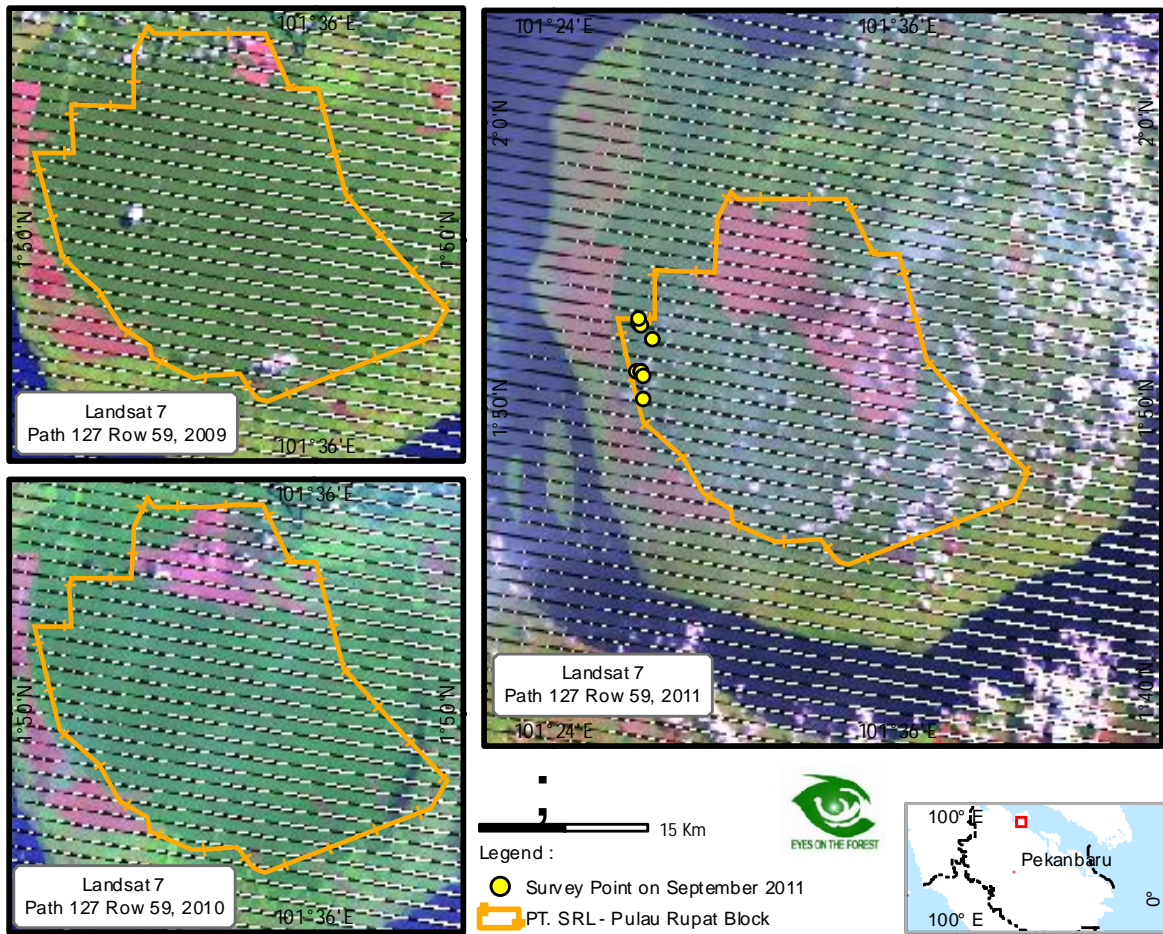
Natural forest clearance by PT SRL in Pulau Rupa along 2011 is obtained through Annual Cutting Plan (RKT/Rencana Kerja Tahunan) that issued by Ministry of Forestry's Director of Development of Industrial Plantation through SK. 20/BPHT-3/2011, by legalizing natural forest license via Annual Cutting Plan of Pulpwood Plantation 2011 to PT SRL in Pulau Rupa in size of 8,897 hectares (Riau Pos daily, 19 August 2011).

DPRD Riau, the provincial legislative council, have reportedly submitted a letter to Minister of Forestry to stop PT SRL's logging operation in Pulau Rupa as long as all land disputes against villagers are being accomplished (Tribun Pekanbaru daily, 25 October 2011). Riau Forestry Service said that the organization support DPRD Riau's Commission A to recommend the Minister to rescind PT SRL license in Pulau Rupa (Tribun Pekanbaru, 18 November 2011).

DPRD Riau and DPRD Meranti District legislative council obtain complaints that lodged by community of Pulau Rupa over PT SRL expansion in such an area which ignored the rights of community to hold consultation and delineation of the company's operation in the island (Riau Terkini website, 29 September 2011).

Latest development in Pulau Rupa is riot broke up in medio of November 2011 when several heavy machines and workers camps of PT SRL were burned down as community protested the company still operates amid calls to cool down the situation as uttered by legislators and local government (Riau Pos, 18 November 2011).

EoF call on APRIL and PT SRL to stop sourcing timber and to stop logging operation in deep peat that protected by the Law and respect High Conservation Value that pledged by the giant company to protect. EoF calls on the Government to review the conversion license granted to PT SRL in Pulau Rupa in a part of the Indonesian Government's efforts to reduce green house gas emission by deforestation.



Map 2. Maps show natural forest cover and deforestation occurs in concession of PT Sumatera Riang Lestari of Pulau Rupert block. In 2009 most of forest cover in the concession still excellent despite few of it cleared. Drastic change due to rampant deforestation takes place between 2010 and 2011. Survey point (yellow color) shows EoF investigators team find APRIL's timber supplier, PT SRL clearcutting natural forest and draining peat canals in September 2011.

Pictorial evidence by EoF investigation in PT Sumatera Riang Lestari
Blok Pulau Rumat concession in September 2011



Photo 1. Peat canal drainage and forest clearance in Pulau Rumat, an island in east of Sumatra, by PT. Sumatera Riang Lestari, a company affiliated to APRIL in Riau. EoF photo on 22 September 2011 with coordinate N. 1°51'7.60"E. 101°27'7.54"



Photo 2. Peat canal drained by PT. SRL in Pulau Rupert where natural forest is clearcut for pulpwood plantation conversion while community wish to protect it. Coordinate N. 1°51'20.52" E. 101°27'12.36". Photo by EoF on 22 September 2011



Photo 3. An excavator is draining deep peat in concession of PT SRL Blok Pulau Rupert for constructing canals. Coordinate N 1°51'54.12" E 101°27'18.98". EoF photo on 22 September 2011



Photo 4. Deep peat canals in expanding concession of PT Sumatera Riang Lestari In Pulau Rupert, a small island eastern of Riau Province. Good natural forest cover will be converted to pulpwood plantation in peatlands that should be protected instead of destroying it. Coordinate N 1°51'54.12" E 101°27'18.98". EoF photo on 22 September 2011



Photo 5. Natural forest clearance in peat Pulau Rupert, a small island in eastern of Sumatra, by PT Sumatera Riang Lestari, an affiliated company to APRIL in Riau Province. Coordinate N 1°52'12.30 E 101°27'25.37". Photo by EoF on 22 September 2011



Photo 6. Natural forest clearcutting by PT SRL Blok Pulau Rupert which affiliated to APRIL in Riau province where excavators move felled logs to logyard. Coordinate N. 1°52'12.97" E. 101°27'25.92" . EoF photo on 22 September 2011



Photo 7. Natural forest clearcutting by PT SRL Blok Pulau Rupert which affiliated to APRIL in Riau province where natural forest is in good condition and should be protected. Coordinate N 1°52'12.84"E 101°27'26.16". Photo taken by EoF on 22 September 2011



Photo 8. Natural forest clearcutting in Pulau Rupert by PT. SRL, an APRIL affiliated company, for pulpwood plantation. Deforestation takes place in peatlands and good natural forest that should be protected. Coordinate N 1°52'37.09"E 101°27'31.18". EoF photo on 22 September 2011



Photo 9. An excavator is draining peat canal in Pulau Rupert where PT SRL expands its pulpwood plantation in the small island, east of Riau province. Good forest and deep peat should be protected as Law stipulates. Coordinate N 1°52'4.12" E 101°27'17.35". EoF photo on 22 September 2011



Photo 10. Peat canals drained in Pulau Rupert by PT SRL, an APRIL timber supplier, will release huge carbon and drive global climate. Peat canal drainage sometimes is dig out unsustainably. Coordinate N1°53'6.53" E 101°26'56.80". EoF photo on 22 September 2011



Photo 11. Natural forest clearance by PT SRL Blok Pulau Rupert, a company affiliated to APRIL in Riau. This good forest that should be protected will be converted into pulpwood plantation. Coordinate N 1°53'6.56" E 101°26'56.44" Photo EoF on 22 September 2011



Photo 12. Natural forest clearance by PT SRL Blok Pulau Rupert, a company affiliated to APRIL in Riau. This good forest that should be protected will be converted into pulpwood plantation. Coordinate N 1°53'6.37"E 101°26'56.38". EoF photo on 22 September 2011



Photo 13. Natural forest clearance by PT SRL Blok Pulau Rupert, a company affiliated to APRIL in Riau. This good forest that should be protected will be converted into pulpwood plantation. Coordinates N1°53'5.93"E101°26'56.69". Photo by EoF on 22 September 2011



Photo 14. Natural forest clearance by PT SRL Blok Pulau Rupert, a company affiliated to APRIL in Riau. This good forest that should be protected will be converted into pulpwood plantation. Coordinates N 1°53'5.93" E 101°26'56.69". Photo by EoF on 22 September 2011

END

For further information, please contact:

Eyes on the Forest Editor

Afdhal Mahyuddin

Ph: +62-813 8976 8248

e-mail : eof@eyesontheforest.or.id